



E & A CONSULTING GROUP, INC.

Engineering Answers

10909 Mill Valley Rd, Ste 100 | Omaha, NE 68154
402.895.4700
eacg.com

Dear Homeowner,

The SID has contracted concrete work to be done on the streets in your SID. A contractor will be on site to do work which includes removing the existing concrete that is damaged and replacing it with new pavement.

Throughout the course of this project, there could be some minimal damage done to yards and or sprinkler systems. The contractor that is on site will be responsible for replacing any damaged sprinkler lines and/or heads. They will also be responsible for any yard damage. Once the new seed and mat and/or sod is installed, it will be the responsibility of the homeowner at each lot to water the new seed and mat and/or sod until it has re-established itself.

Before starting the work on site, each contractor must put in a call and have all the utilities in the area located. You might notice some areas in your yard that have been flagged and/or spray painted. This does not indicate the area in which they will be working. It is just to give them an idea of what kind of utilities are in the area that could possibly be hit while the contractor is on site working.

All work that is completed in public Right-of-Way and follow City of Omaha and Sarpy County specifications.

The work in your SID should not take longer than 30 days to complete. Please let me know if you have any questions or concerns on this at all.

Thank You,

A handwritten signature in black ink, appearing to read 'Nelson Flores', written over a white background.

Nelson Flores

Construction Admin Tech

Engineering Answers...by transforming concepts into reality

E & A Consulting Group, Inc.

10909 Mill Valley Road, Suite 100 • Omaha, NE 68154

402.895.4700 (o) • 402.506.5023 (m)

nflores@eacg.com



STANDING BEAR WEST

2024 STREET RECONSTRUCTION

SID NO. 482
DOUGLAS COUNTY, NEBRASKA

APPROXIMATE BID QUANTITIES

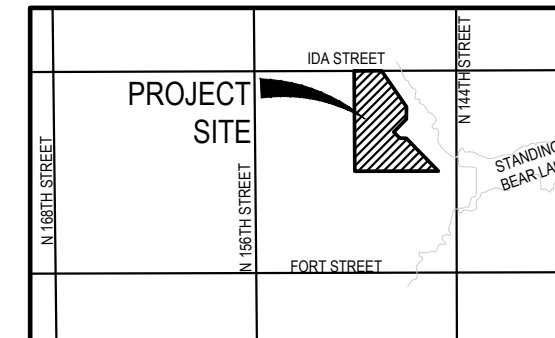
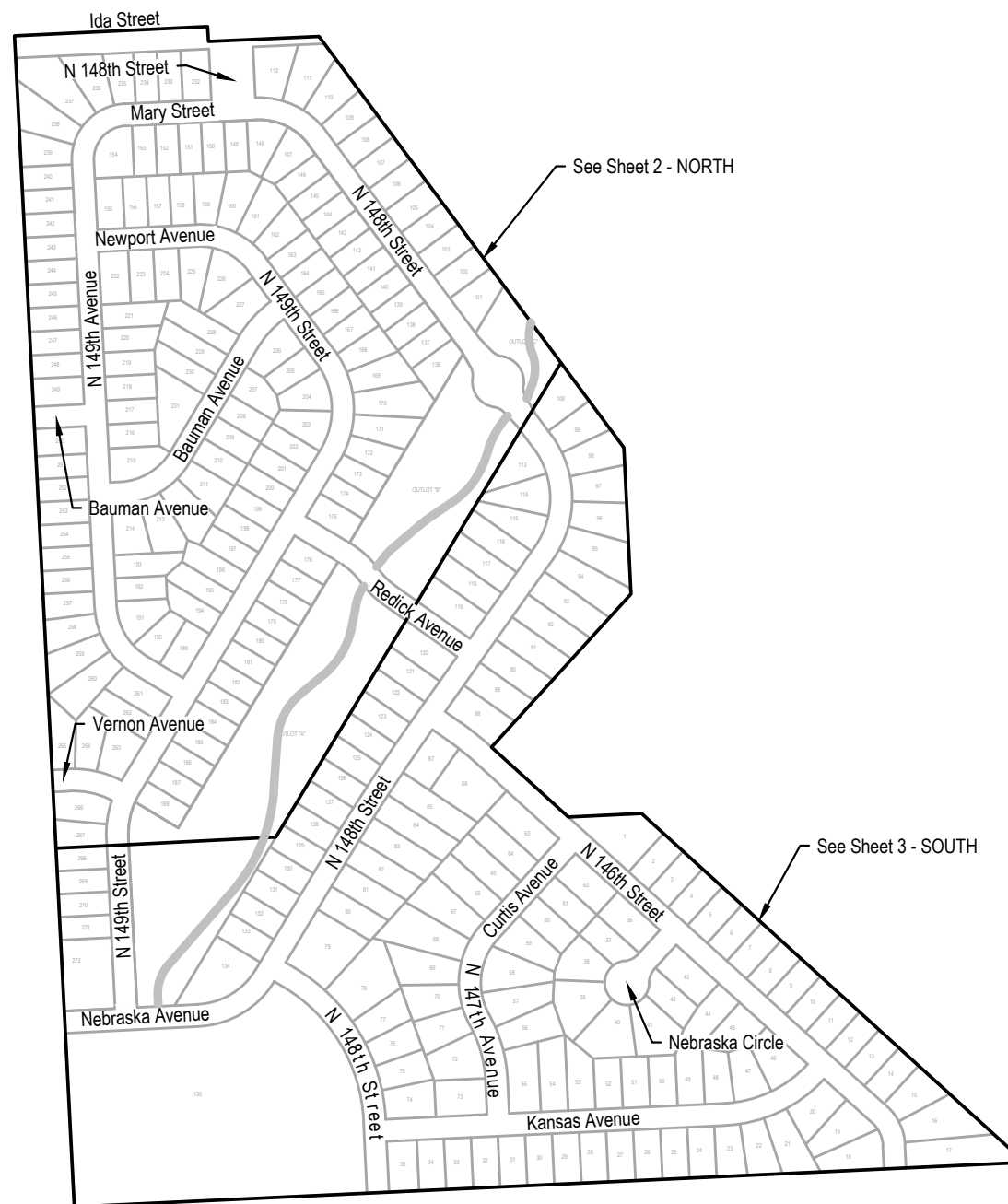
ITEM	DESCRIPTION	QUANTITY	UNIT
1	CONCRETE PAVEMENT REPAIR, LARGE AREA	243	SY
2	CONCRETE PAVEMENT REPAIR, SMALL AREA	306	SY
3	FULL DEPTH SAW CUT EXISTING PAVEMENT	1,037	LF
4	ADJUST MANHOLE TO GRADE	1	EA
5	REMOVE AND REPLACE 6" PCC MULTI-USE TRAIL	272	SF
6	REMOVE AND REPLACE PCC SIDEWALK	350	SF
7	REMOVE AND REPLACE PCC CURB RAMP	244	SF
8	REMOVE PCC SIDEWALK	224	SF
9	REMOVE PCC CURB RAMP	125	SF
10	CONSTRUCT PCC SIDEWALK	290	SF
11	CONSTRUCT PCC CURB RAMP	126	SF
12	CONSTRUCT IMPRINTED PCC SURFACE	78	SF
13	CONSTRUCT DETECTABLE WARNING PANEL (5 locations)	80	SF
14	REMOVE AND REPLACE FAULTY SUBGRADE	25	TN
15	ADJUST SPRINKLER (AS NEEDED)	2	EA
16	REPLACE CURB INLET TOP WITH ARMOR FACE	1	EA

NOTE TO BIDDERS

- All project procedures, materials, bonds and reserves shall conform to the City of Omaha's Standard Specifications for Public Works Construction, 2024 Edition ("Standard Specifications"). It is the responsibility of the CONTRACTOR to be familiar with the contents of the Standard Specifications. The Standard Specifications can be found at: <https://publicworks.cityofomaha.org/contractors-consultants2/contractors/standard-plates-curb-ramps-and-specifications>
- References to "Standard Plates" refers to the City of Omaha's 2024 Standard Plate list. These Standard Plates can be found at: <https://publicworks.cityofomaha.org/2024-standard-plate>

The CONTRACTOR is referred to the following Standard Plates for use on this project:

PLATE NO.	DESCRIPTION	REVISION DATE
503-01	Sidewalk Construction	02/13/2024
504-01-1	Concrete Curb Ramp	02/13/2024
702-10	Reinforced Concrete Curb Inlet Cover with Face Armor	02/13/2024
1002-02-1, 3, 4	Pavement Repair	02/13/2024



VICINITY MAP

INDEX OF SHEETS

SHEET NO.	DESCRIPTION
1	COVER
2	NORTH
3	SOUTH
4	TOTAL QUANTITIES
5	COMPOSITE MAP



APPLICANT

SID # 482
Chad Marquis, Chairman
11440 West Center Road, Ste C
Omaha, NE 68144
P:(402) 334-0700
F:(402) 334-0815
mjohnson@fjjblaw.com

DESIGNER

E & A Consulting Group, Inc
Teresa Wooten, P.E.
10909 Mill Valley Road, Suite 100
Omaha, NE 68154
P: 402.895.4700
F: 402.895.3599
twooten@eacg.com

INSPECTOR

E & A Consulting Group, Inc
Randall L. Pierce, P.E.
10909 Mill Valley Road, Suite 100
Omaha, NE 68154
P: 402.895.4700
F: 402.895.3599
rpierce@eacg.com

CONTRACTOR

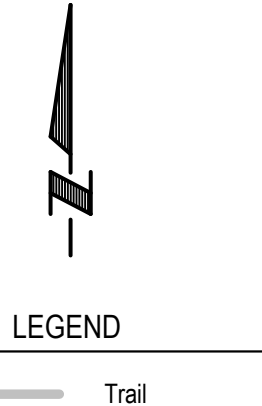
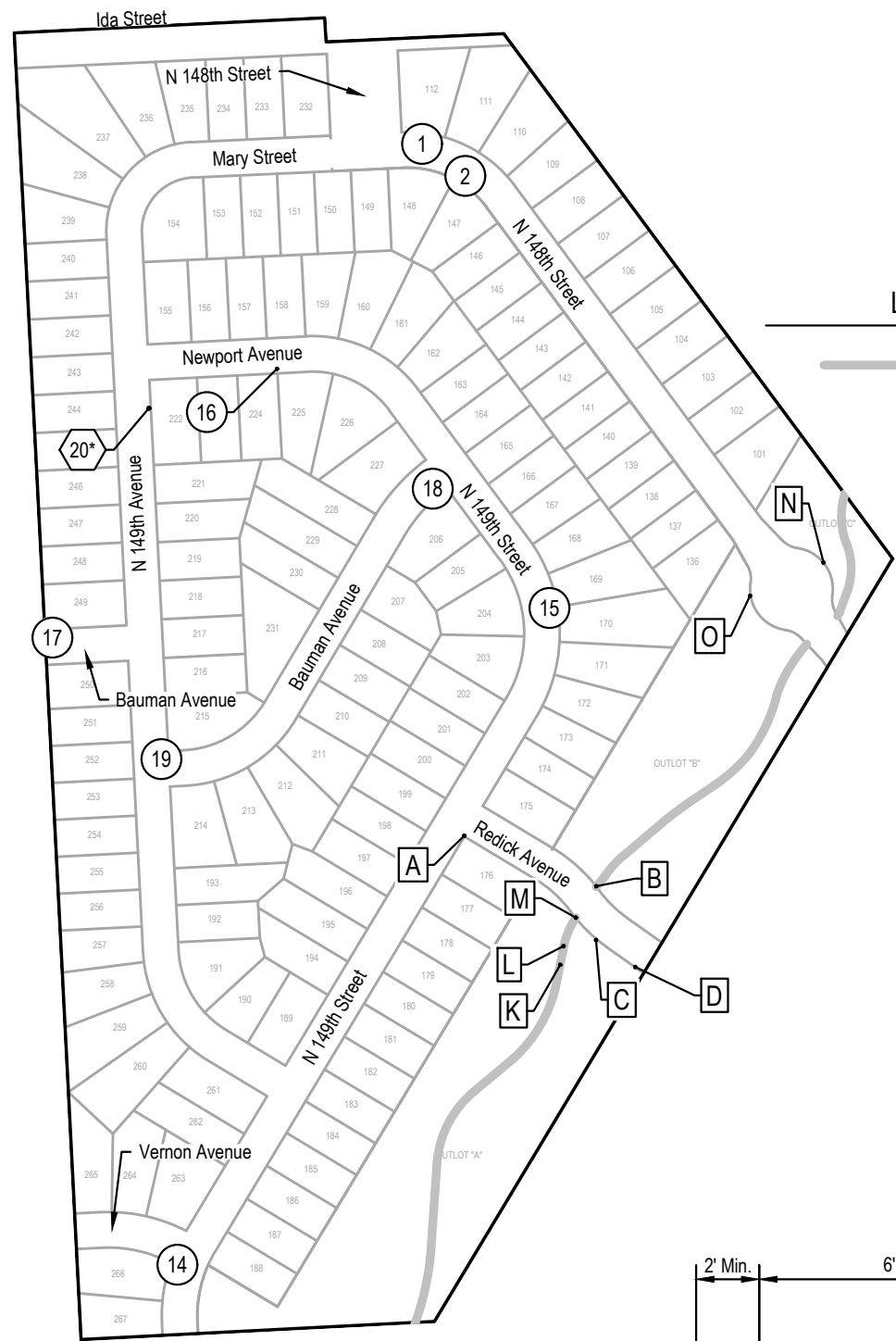
E & A CONSULTING GROUP, INC.
Engineering • Planning • Environmental & Field Services
10909 Mill Valley Road, Suite 100 • Omaha, NE 68154
Phone: 402.895.4700 • Fax: 402.895.3599
www.eacg.com
State of NE Certificate of Authorization #CA0008

STANDING BEAR WEST
2024 STREET
RECONSTRUCTION
SID 482
DOUGLAS COUNTY, NEBRASKA

COVER

Revisions	Date	Description

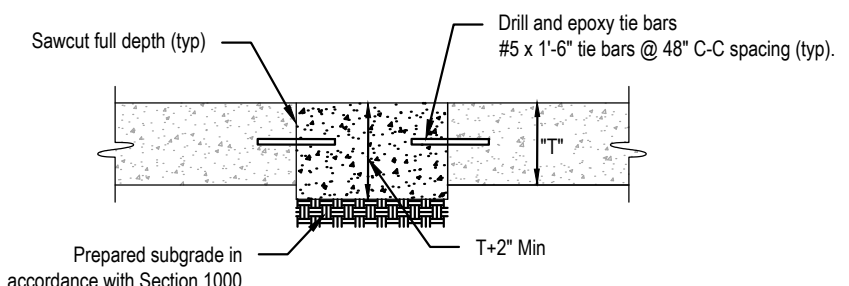
Proj No: P2024-037-013
Date: 10/11/2024
Designed By: TAMM
Drawn By: C.A.
Scale: 1" = 400'
Sheet: 1 of 5



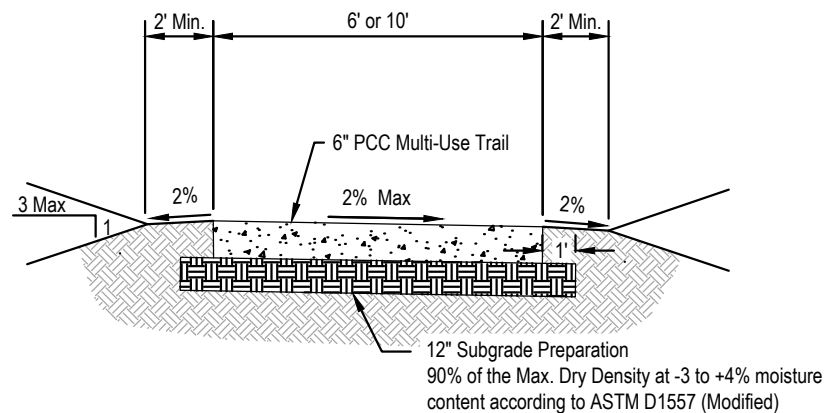
2024 STREET RECONSTRUCTION									
AREA NO.	NO. POURS	SAW CUT L.F.	CURB L.F.	WIDTH	X	LENGTH	LARGE AREA EST S.Y.	SMALL AREA EST S.Y.	NOTES
1	1	35	10	10.0	x	12.5		13.9	
2	1	37	12	12.0	x	12.5		16.7	
14	1	24	12	6.0	x	10.0		6.7	
15	1	36	11	11.0	x	12.5		15.3	
16	1	40	15	15.0	x	12.5		20.8	
17	1	40	15	15.0	x	12.5		20.8	
18	1	36	5	10.0	x	13.0		14.4	
19	1	36	14	10.5	x	3.0		3.5	
				11.0	x	6.0		7.3	

2024 STREET RECONSTRUCTION - CURB INLET TOP		
AREA NO.	QUANTITY (EACH)	NOTES
20*	1	Curb Inlet Top

2024 STREET RECONSTRUCTION					
AREA NO.	TYPE	APPROX. DIMEN.		EST S.F.	NOTES
A	Curb Ramp	3.75	x 25.00	93.8	REMOVE
	Curb Ramp	6.00	x 7.00	42.0	CONSTRUCT, ADA Plate - Cast Iron
	Curb Ramp	6.00	x 7.00	42.0	CONSTRUCT
	Sidewalk	31.00	x 4.00	124.0	REMOVE, Adjust Sprinkler (as needed)
	Sidewalk	31.00	x 5.00	155.0	CONSTRUCT
	Imprinted Surface	13.00	x 6.00	78.0	CONSTRUCT
B	Curb Ramp	4.00	x 13.00	52.0	REMOVE & REPLACE, ADA Plate - Cast Iron
C	Sidewalk	15.00	x 4.00	60.0	REMOVE & REPLACE
D	Sidewalk	5.00	x 4.00	20.0	REMOVE & REPLACE
K	6" Trail	4.50	x 7.50	33.8	REMOVE & REPLACE
L	6" Trail	4.00	x 8.00	32.0	REMOVE & REPLACE
M	Curb Ramp	4.00	x 13.00	52.0	REMOVE & REPLACE, ADA Plate - Cast Iron
N	Sidewalk	4.00	x 20.00	80.0	REMOVE & REPLACE
O	Sidewalk	4.00	x 5.00	20.0	REMOVE & REPLACE



SMALL AREA CONCRETE PAVEMENT REPAIR DETAIL
NOT TO SCALE



TYPICAL TRAIL SECTION
NOT TO SCALE



E & A CONSULTING GROUP, INC.
Engineering • Planning • Environmental & Field Services

**STANDING BEAR WEST
2024 STREET
RECONSTRUCTION**

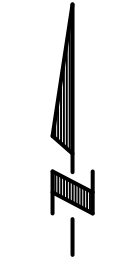
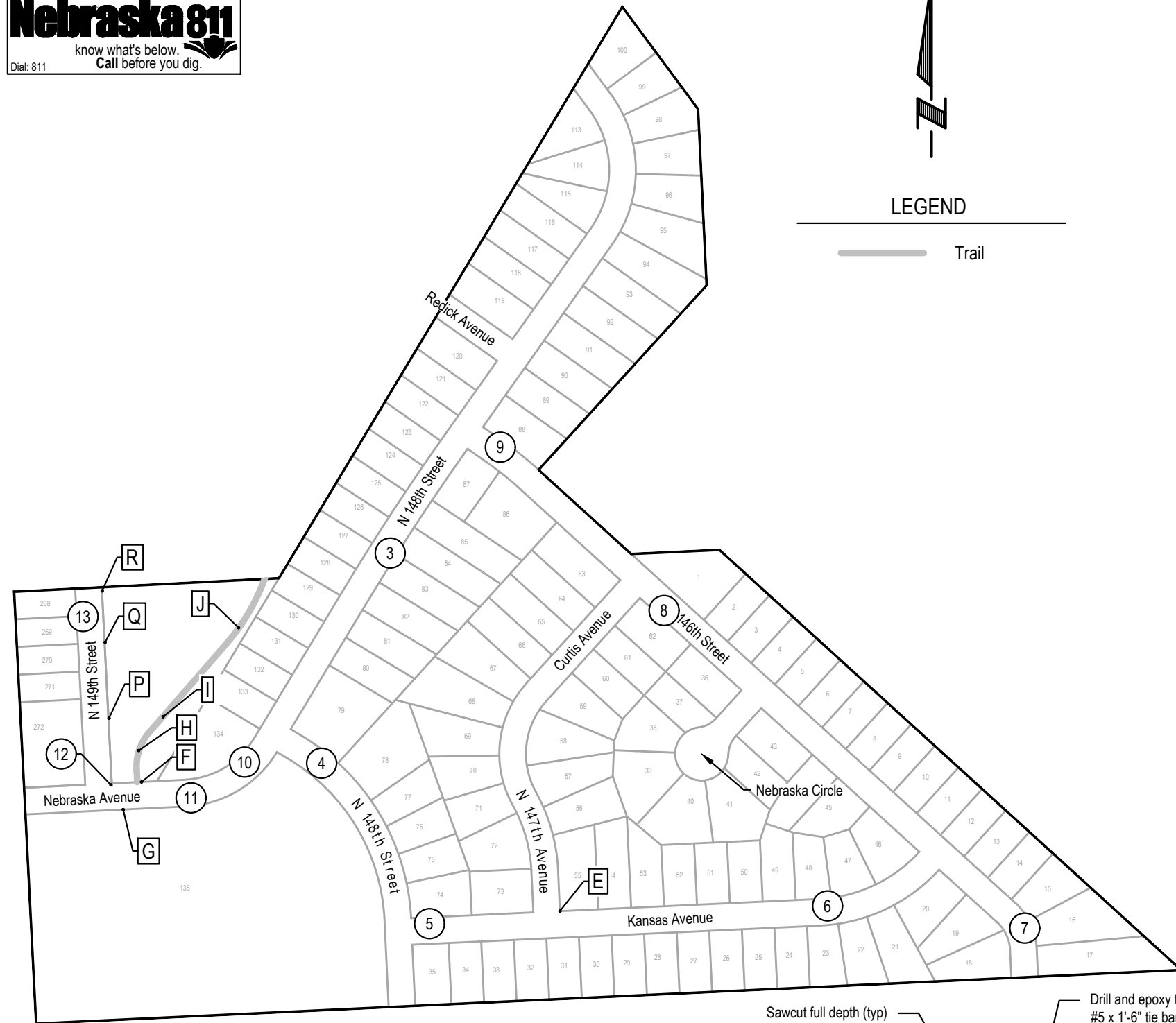
NORTH

DOUGLAS COUNTY, NEBRASKA
SID 482

10/11/2024 3:25 PM

Jeremy Nichols

10/11/2024 3:25 PM \\EACG-net\shares\Projects\2002\037\p13\engineering\cad files\Paving\Standing Bear West 2024 Street Reconstruction-000.dwg

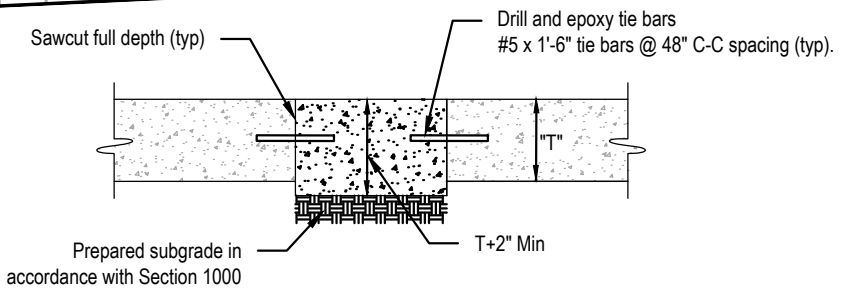


LEGEND

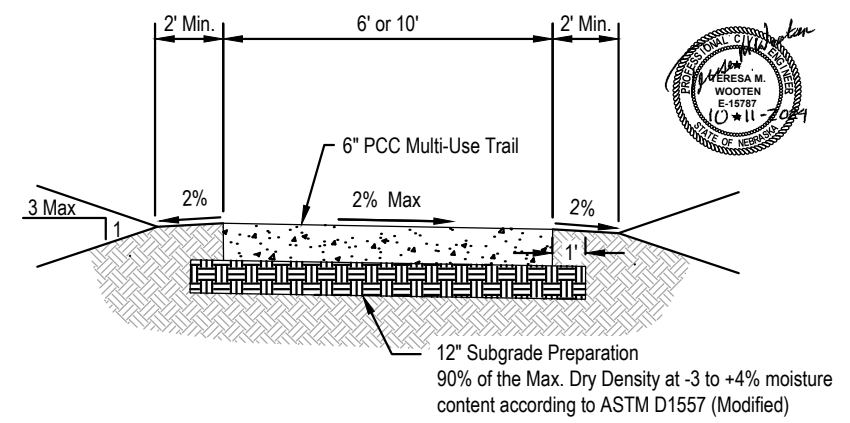


2024 STREET RECONSTRUCTION									
AREA NO.	NO. POURS	SAW CUT L.F.	CURB L.F.	WIDTH	X	LENGTH	LARGE AREA EST S.Y.	SMALL AREA EST S.Y.	NOTES
3	1	40	15	15.0	x	12.5		20.8	
4	2	50	24	12.0	x	25.0		33.3	
5	1	40	15	15.0	x	12.5		20.8	
6	1	70	45	45.0	x	12.5	62.5		
7	1	95	70	70.0	x	12.5	97.2		
8	1	48	23	23.0	x	12.5		31.9	
9	1	55	30	30.0	x	12.5		41.7	
10	1	35	10	10.0	x	12.5		13.9	
11	2	50	60	30.0	x	25.0	83.3		Adjust Manhole
12	1	20	12	3.0	x	10.5		3.5	
13	1	40	15	15.0	x	12.5		20.8	

2024 STREET RECONSTRUCTION					
AREA NO.	TYPE	APPROX. DIMEN.	EST S.F.	NOTES	
E	Curb Ramp	4.50 x 7.00	31.5	REMOVE	
	Curb Ramp	6.00 x 7.00	42.0	CONSTRUCT, ADA Plate - Cast Iron	
	Sidewalk	25.00 x 4.00	100.0	REMOVE, Adjust Sprinkler (as needed), Landscaping	
	Sidewalk	27.00 x 5.00	135.0	CONSTRUCT	
F	Curb Ramp	10.00 x 14.00	140.0	REOMOVE & REPLACE, (2' x 8') ADA Plate - Cast Iron	
G	Sidewalk	5.00 x 6.00	30.0	REMOVE & REPLACE	
H	6" Trail	4.50 x 7.50	33.8	REMOVE & REPLACE	
I	6" Trail	18.00 x 7.50	135.0	REMOVE & REPLACE	
J	6" Trail	5.00 x 7.50	37.5	REMOVE & REPLACE	
P	Sidewalk	4.00 x 15.00	60.0	REMOVE & REPLACE	
Q	Sidewalk	4.00 x 10.00	40.0	REMOVE & REPLACE	
R	Sidewalk	4.00 x 10.00	40.0	REMOVE & REPLACE	



SMALL AREA CONCRETE PAVEMENT REPAIR DETAIL
NOT TO SCALE



TYPICAL TRAIL SECTION
NOT TO SCALE

10889 Mill Valley Road, Suite 100 • Omaha, NE 68154
Phone: 402.865.4700 • Fax: 402.865.3599
www.eag.com
State of NE Certificate of Authorization #CA008

E & A CONSULTING GROUP, INC.
Engineering • Planning • Environmental & Field Services

E & A CONSULTING GROUP, INC.
Engineering Answers

STANDING BEAR WEST
2024 STREET
RECONSTRUCTION
SID 482
DOUGLAS COUNTY, NEBRASKA

SOUTH

Proj No: P2024.037.013
Date: 10/11/2024
Designed By: TAMM
Drawn By: C.A.
Scale: 1" = 20'
Sheet: 3 of 5

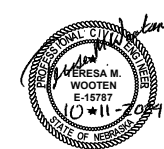
10/11/2024 3:25 PM
\\EACC.net\shares\Projects\2024\037\p13\engineering\cad files\Paving\Standing Bear West 2024 Street Reconstruction-000.dwg



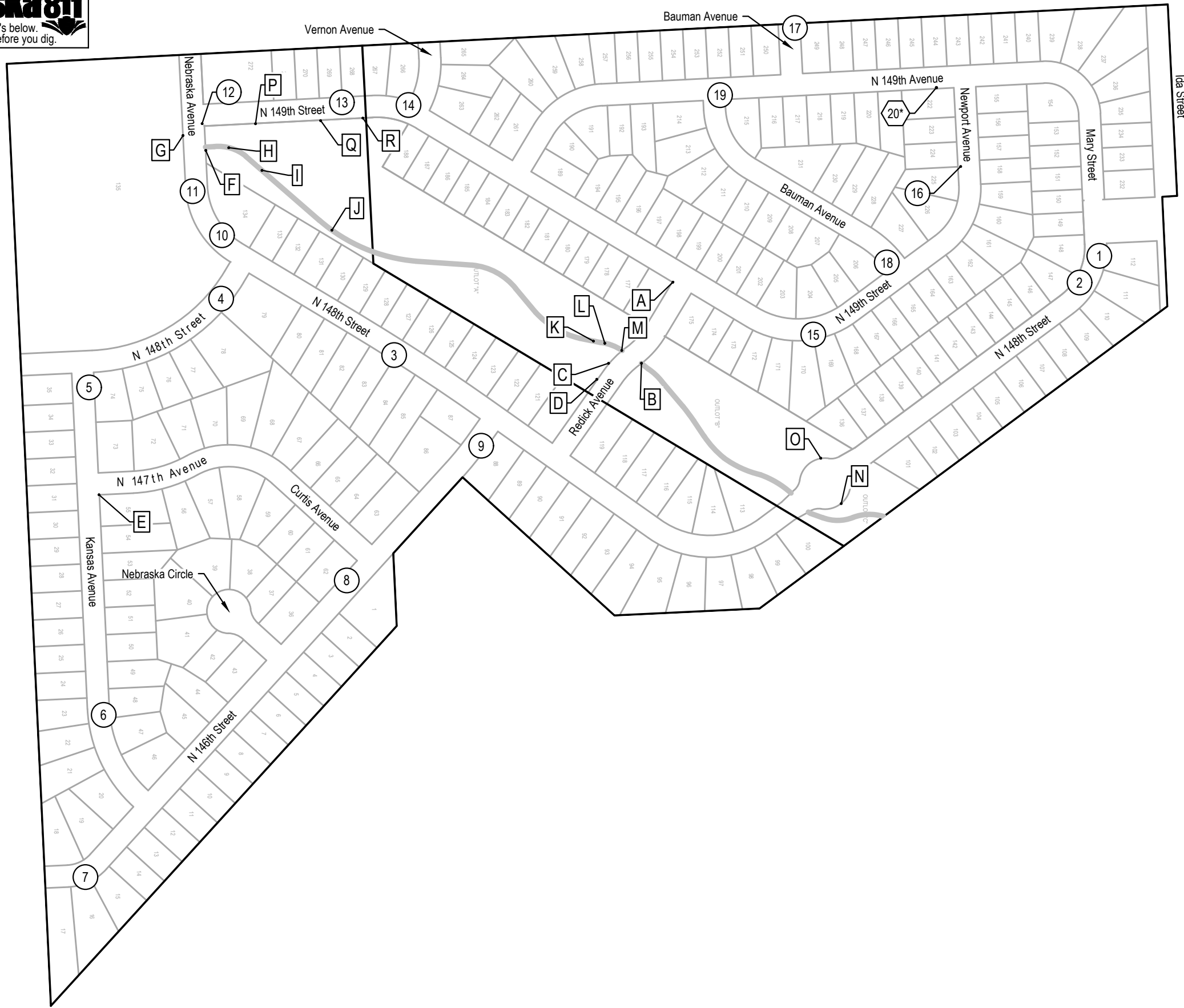
2024 STREET RECONSTRUCTION									
AREA NO.	NO. POURS	SAW CUT L.F.	CURB L.F.	WIDTH	X	LENGTH	LARGE AREA EST S.Y.	SMALL AREA EST S.Y	NOTES
1	1	35	10	10.0	x	12.5		13.9	
2	1	37	12	12.0	x	12.5		16.7	
3	1	40	15	15.0	x	12.5		20.8	
4	2	50	24	12.0	x	25.0		33.3	
5	1	40	15	15.0	x	12.5		20.8	
6	1	70	45	45.0	x	12.5	62.5		
7	1	95	70	70.0	x	12.5	97.2		
8	1	48	23	23.0	x	12.5		31.9	
9	1	55	30	30.0	x	12.5		41.7	
10	1	35	10	10.0	x	12.5		13.9	
11	2	50	60	30.0	x	25.0	83.3		Adjust Manhole
12	1	20	12	3.0	x	10.5		3.5	
13	1	40	15	15.0	x	12.5		20.8	
14	1	24	12	6.0	x	10.0		6.7	
15	1	36	11	11.0	x	12.5		15.3	
16	1	40	15	15.0	x	12.5		20.8	
17	1	40	15	15.0	x	12.5		20.8	
18	1	36	5	10.0	x	13.0		14.4	
19	1	36	14	10.5	x	3.0		3.5	
				11.0	x	6.0		7.3	

2024 STREET RECONSTRUCTION - CURB INLET TOP		
AREA NO.	QUANTITY (EACH)	NOTES
20"	1	Curb Inlet Top

2024 STREET RECONSTRUCTION					
AREA NO.	TYPE	APPROX. DIMEN.		EST S.F.	NOTES
A	Curb Ramp	3.75	x 25.00	93.8	REMOVE
	Curb Ramp	6.00	x 7.00	42.0	CONSTRUCT, ADA Plate - Cast Iron
	Curb Ramp	6.00	x 7.00	42.0	CONSTRUCT
	Sidewalk	31.00	x 4.00	124.0	REMOVE, Adjust Sprinkler (as needed)
	Sidewalk	31.00	x 5.00	155.0	CONSTRUCT
	Imprinted Surface	13.00	x 6.00	78.0	CONSTRUCT
B	Curb Ramp	4.00	x 13.00	52.0	REMOVE & REPLACE, ADA Plate - Cast Iron
C	Sidewalk	15.00	x 4.00	60.0	REMOVE & REPLACE
D	Sidewalk	5.00	x 4.00	20.0	REMOVE & REPLACE
E	Curb Ramp	4.50	x 7.00	31.5	REMOVE
	Curb Ramp	6.00	x 7.00	42.0	CONSTRUCT, ADA Plate - Cast Iron
	Sidewalk	25.00	x 4.00	100.0	REMOVE, Adjust Sprinkler (as needed), Landscaping
	Sidewalk	27.00	x 5.00	135.0	CONSTRUCT
F	Curb Ramp	10.00	x 14.00	140.0	REMOVE & REPLACE, (2' x 8') ADA Plate - Cast Iron
G	Sidewalk	5.00	x 6.00	30.0	REMOVE & REPLACE
H	6" Trail	4.50	x 7.50	33.8	REMOVE & REPLACE
I	6" Trail	18.00	x 7.50	135.0	REMOVE & REPLACE
J	6" Trail	5.00	x 7.50	37.5	REMOVE & REPLACE
K	6" Trail	4.50	x 7.50	33.8	REMOVE & REPLACE
L	6" Trail	4.00	x 8.00	32.0	REMOVE & REPLACE
M	Curb Ramp	4.00	x 13.00	52.0	REMOVE & REPLACE, ADA Plate - Cast Iron
N	Sidewalk	4.00	x 20.00	80.0	REMOVE & REPLACE
O	Sidewalk	4.00	x 5.00	20.0	REMOVE & REPLACE
P	Sidewalk	4.00	x 15.00	60.0	REMOVE & REPLACE
Q	Sidewalk	4.00	x 10.00	40.0	REMOVE & REPLACE
R	Sidewalk	4.00	x 10.00	40.0	REMOVE & REPLACE



E & A CONSULTING GROUP, INC. Engineering • Planning • Environmental & Field Services <small>10809 Mill Valley Road, Suite 100 • Omaha, NE 68154 Phone: 402.685.4700 • Fax: 402.685.3599 www.eag.com State of NE Certificate of Authorization #CA0008</small>	 E & A CONSULTING GROUP, INC. Engineering Answers	STANDING BEAR WEST 2024 STREET RECONSTRUCTION <small>SID 482 DOUGLAS COUNTY, NEBRASKA</small>	TOTAL QUANTITIES
<small>10/11/2024 3:25 PM \\EACG.net\shares\Projects\2002\037\p13\engineering\cad files\Paving\Standing Bear West 2024 Street Reconstruction-000.dwg</small>			
<small>Proj No:</small> P2002.037.013	<small>Date:</small> 10/11/2024	<small>Revisions</small>	
<small>Designed By:</small> TAMM	<small>Drawn By:</small> C.A.	<small>Date</small>	<small>Description</small>
<small>Scale:</small> N/A	<small>Sheet:</small> 4 of 5		



LEGEND

Trail



Revisions	Date	Description
1	10/11/2024	TAMM

COMPOSITE MAP

STANDING BEAR WEST
2024 STREET
RECONSTRUCTION
SID 482
DOUGLAS COUNTY, NEBRASKA



E & A CONSULTING GROUP, INC.
Engineering • Planning • Environmental & Field Services
10809 Mill Valley Road, Suite 100 • Omaha, NE 68154
Phone: 402.665.4700 • Fax: 402.665.3599
www.eaag.com
State of NE Certificate of Authorization #CA0008